

Supplementary Handout
AMS/SMT 2023
Denver, Colorado
11/11/2023

Developing Corpora for Musical Traditions Across the Globe:
Music Analysis with the MIRAGE Meta-Corpus

David R. W. Sears¹, Ting Ting Goh¹, Ngan Nguyen², Tommy Dang²

¹ Performing Arts Research Lab (PeARL), School of Music, Texas Tech University

² Interactive Data Visualization Lab (iDVL), Department of Computer Science, Texas Tech University

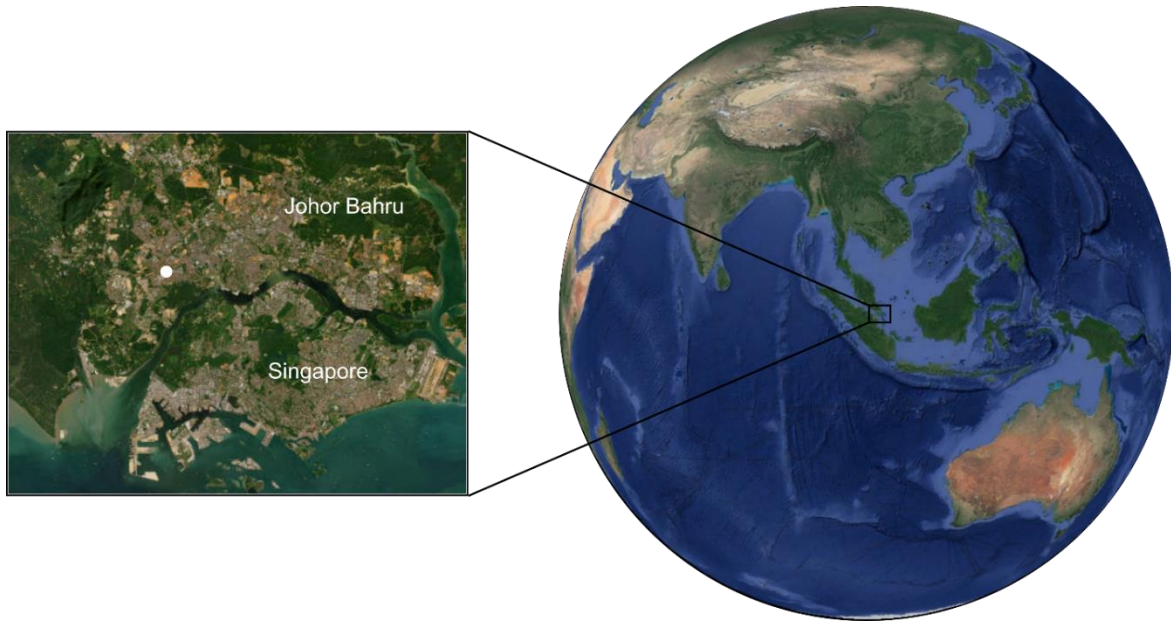


Figure 1 (color). Satellite images of the southern tip of the Malaysian peninsula (left) and the Earth (right). The white dot marks the geographic coordinates of Best FM 104.1 in Johor Bahru, Malaysia. Map source: esri.

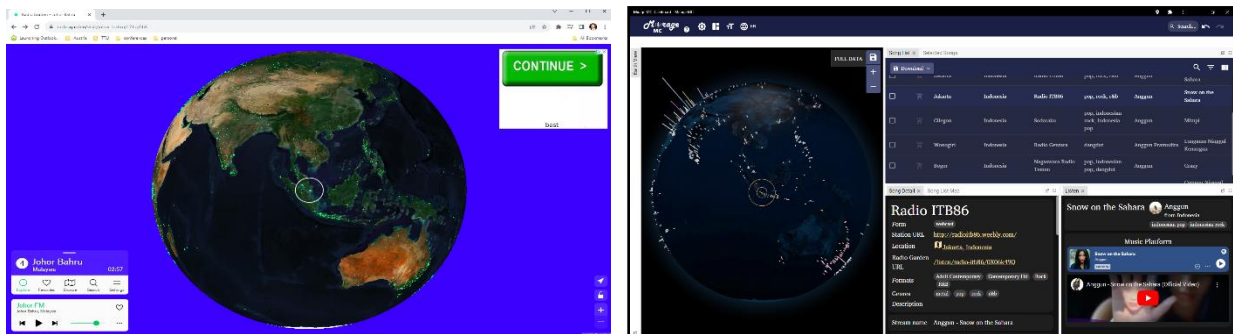


Figure 2 (color). Left: Screen shot of Radio Garden. <https://radio.garden/visit/>. Right: The current user interface for the MIRAGE Online Dashboard. This dashboard presents the earth view, song list, song detail, and listen panes for Anggun’s “Snow on the Sahara.” <https://idatavisualizationlab.github.io/mirage-mc/>

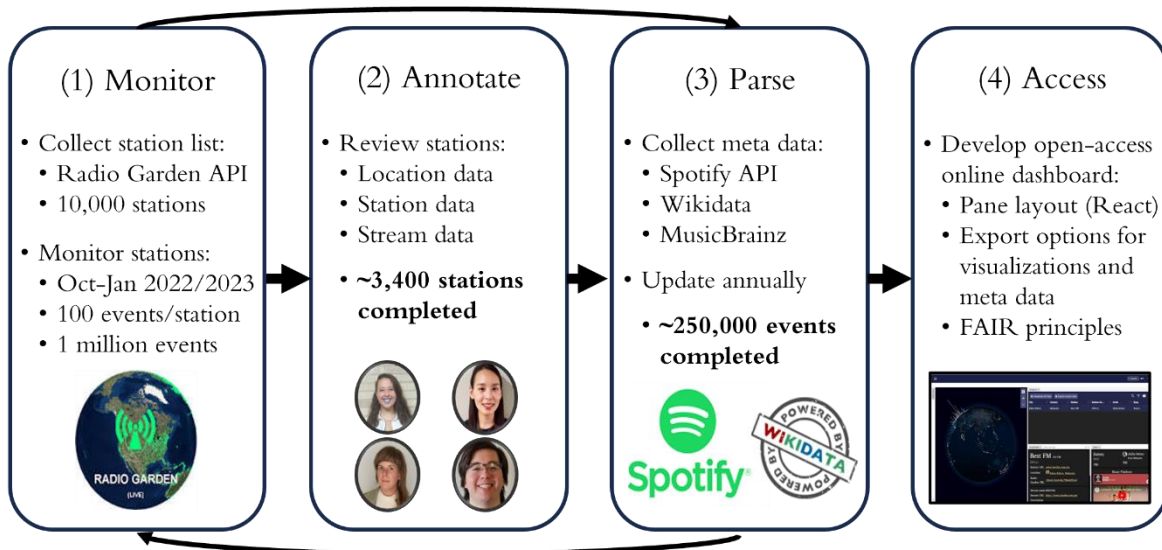


Figure 3 (color). Data collection and development pipeline for the MIRAGE Meta-Corpus and Online Dashboard. Stages 1 and 3 will be updated annually.

<pre> <location> <city>ac <country>ac <coordinates>ac <station> <name>bc <form>c <format>c <genre>bc <website>bc <stream> <time@station>b <url>a <metadata>b <artist> <name>d <type>d <gender>d <country>d <genre>d <popularity>d <instruments>d <track> <title>d <duration>d <year_released>d <key>d <lyrics_language>d </pre>	<p>Johor Bahru Malaysia 103.6545°, 1.4783°</p> <p>Best FM Simulcast (FM 104.1) adult contemporary, contemporary hit, Indonesian pop pop, Indonesian pop, punk, mandopop http://www.bestfm.com.my</p> <p>28-Dec-2022 09:37:50 /listen/best-fm/7MwM5caF Aisha Retno – Sutera</p> <p>Aisha Retno musical artist female Malaysia Pop 44 piano, voice</p> <p>Sutera 00:03:18 2022 C minor Malay</p>
-----------------------------------------------------------------------------------------------------------------------------------------------------------------------------------------------------------------------------------------------------------------------------------------------------------------------------------------------------------------------------------------------------------------------------------------------------------------------------------------------------------------------------------------------------------------------------------------------------------------------------------------------------------------------	---------------------------------------------------------------------------------------------------------------------------------------------------------------------------------------------------------------------------------------------------------------------------------------------------------------------------------------------------------------------------------------------------------------------------------------------------------------------------------------------------------------

Figure 4. Left: Selected variables from the encoding scheme for MIRAGE Meta-Corpus, expressed in pseudocode. Meta data were obtained from the following sources: ^a Radio Garden API; ^b Internet Radio Station Stream Encoder; ^c Annotator review; ^d Spotify/Wikidata APIs. Right: An example of the meta data for an event in MIRAGE Meta-Corpus.

Continent	Radio Stations	Sovereign States
Africa	392 (4%)	39 (58%)
Asia	653 (7%)	38 (59%)
Europe	5,161 (52%)	49 (60%)
North America	2,243 (22%)	33 (67%)
Oceania	222 (2%)	5 (17%)
South America	1,329 (13%)	13 (87%)
TOTAL	10,000	177



Figure 5. Left: Table listing for each continent the number of radio stations and the number and percentage of sovereign states that feature at least one radio station in MIRAGE Meta-Corpus. Right: Map of the location of all radio stations in MIRAGE Meta-Corpus. The size of each bubble represents the number of stations at that location.

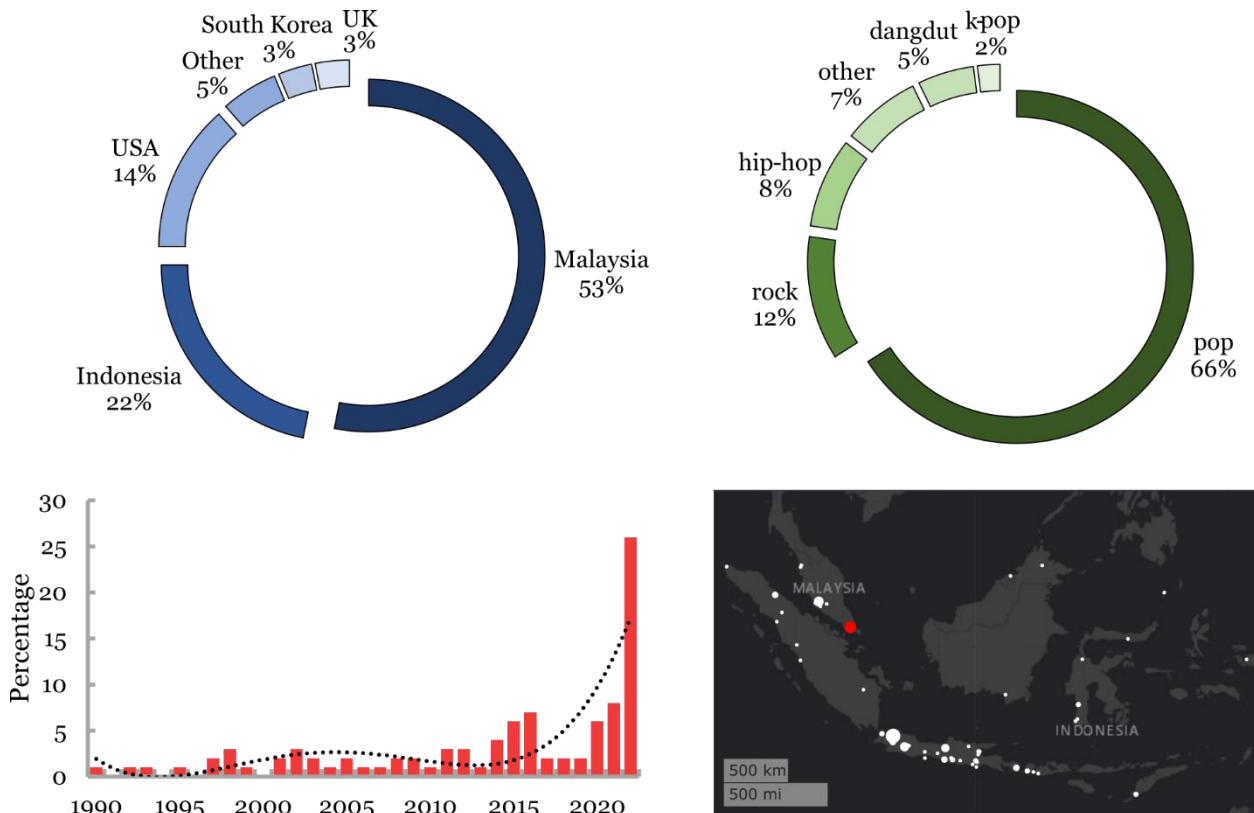


Figure 6 (color). Visualizations for the song list from Best FM 104.1 in Johor Bahru, Malaysia. Top: Donut plots of the percentage of artists by birth country and genre. Bottom: Histogram of the percentage of songs by year of release and map of the location of stations in southeast Asia. Johor Bahru, Malaysia appears in red.

Chord symbols: i, \flat VI, iv, $ii^{\circ 7}$, V



Figure 7. Top: Naim Daniel, “Purnama.” Introduction. (0:00-00:15). Bottom left: Saing-Gauk (Burmese arched harp). <https://www.metmuseum.org/art/collection/search/502040>. Bottom right: Suling/Seruling (bamboo flute). <https://en.m.wikipedia.org/wiki/File:Suling.jpg>.



Figure 8. Instagram video posted by arranger Hanis Rafi (@hanisrafi) of seruling player Muhardiman Ismail’s (Mohar’s) recording session for Naim Daniel’s “Purnama.” <https://www.instagram.com/p/CIKW2mRHuRf/>.

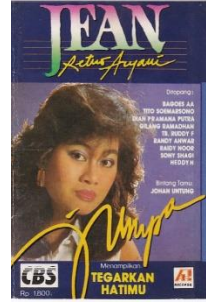


Figure 9. Left: A Pasindhèn performance, https://commons.wikimedia.org/wiki/File:Ohlala_sinden.jpg. Right: Cassette album cover from Jean Retno Aryani's *Jumpa*.

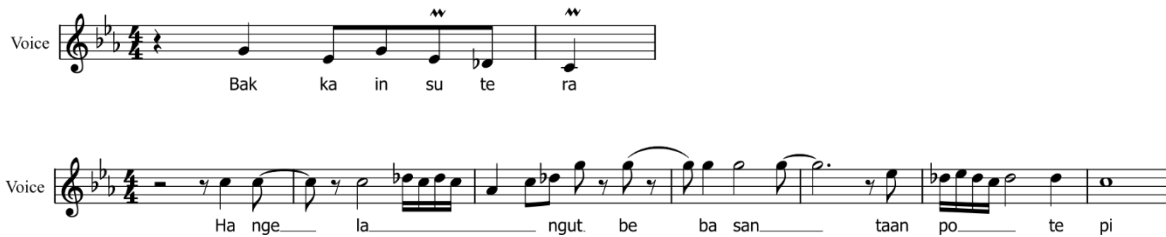


Figure 10. Aisha Retno, “Sutera.” Refrain (top) and Bridge (bottom). (1:23-1:37).



Figure 11. Tik Tok videos posted by Aisha Retno (@aisharett) in advance of the release of her single, “Sutera.” Left: <https://www.tiktok.com/@aisharett/video/7121952624856894746?lang=en>. Right: <https://www.tiktok.com/@aisharett/video/7122088615596854555?lang=en>.

يا رب واجمعنا واحباب لنا
 في دارك الفردوس
 يا رب واجمعنا واحباب لنا
 في دارك الفردوس اطيب موضع

O Lord, gather us and our loved ones
 in your abode of paradise.
 O Lord, gather us and our loved ones
 in your abode of paradise, the best place.

Figure 12. UNIC, “Ainul Mardhiah G.G.V 2017.” Lyrics in the introduction. (0:10-1:03)

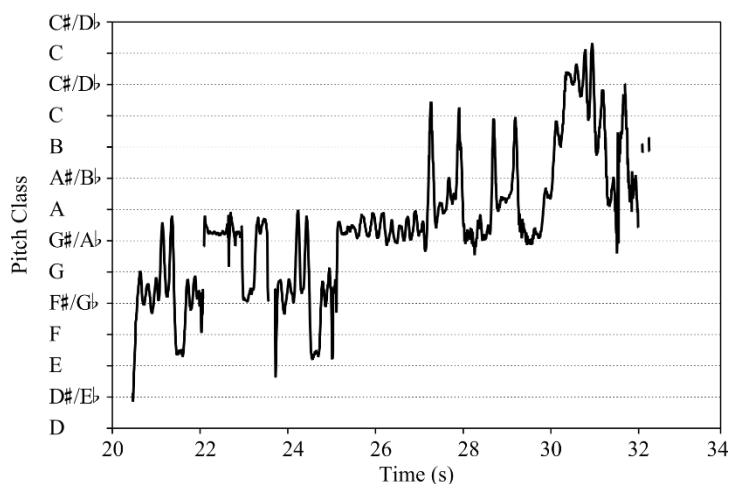


Figure 13. UNIC, “Ainul Mardhiah G.G.V 2017.” Pitch contour line plot of the vocal part. (0:20-0:34)

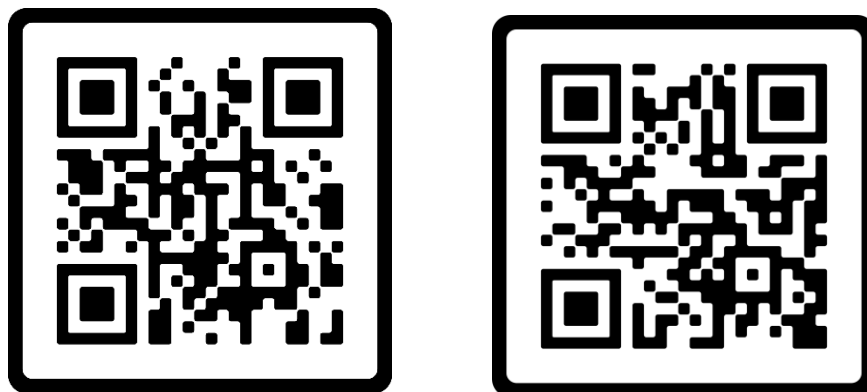


Figure 14. QR codes for the current draft of the MIRAGE Online Dashboard (left) and a ‘declaration of interest’ google form for collecting data/visualizations from, or participating in, the MIRAGE project.